

Ruthmann TU285

↑
28.5 m
↓

Maximum
working
height



With 28.5 m of working height the TU285 is available for self-drive or operated hire. Built with the outstanding quality that we expect from Ruthmann the T285 has an impressive outreach of up to 20.5 m and a cage capacity of 320 kg.

Material Handling Capabilities

- ✓ Cage capacity of 320 kg
- ✓ Lifting brackets available

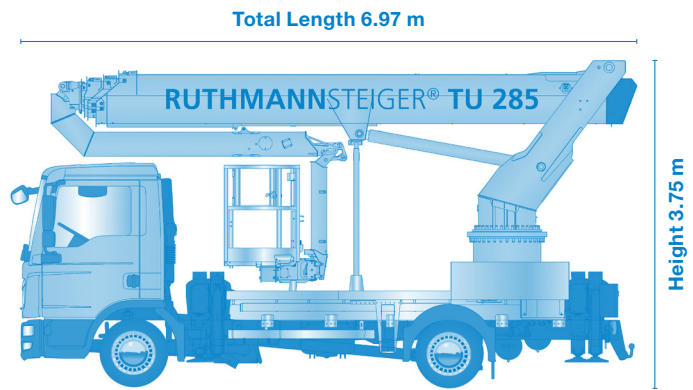
Key Benefits & Features

- ✓ Outreach of up to 20.5 m
- ✓ 110V power in the to work cage
- ✓ Variable jacking

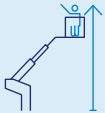
Available for Hire with

- ✓ Lifting brackets
- ✓ Air & water in the work cage
- ✓ Available for self-drive hire or with an operator

Ruthmann TU285



28.5 m
Working Height



L1.7 x W0.86 (m)
Standard Cage Dimensions



320 kg
Cage Capacity



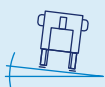
3.75 m
Transport Height



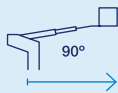
7.5 t
Gross Weight



5°
Permissible Inclination



20.5 m
Lateral Outreach



L1.7 x W0.86 (m)
Maximum Cage Dimensions



+/-90°
Cage Rotation



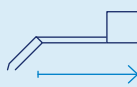
6.97 m
Transport Length



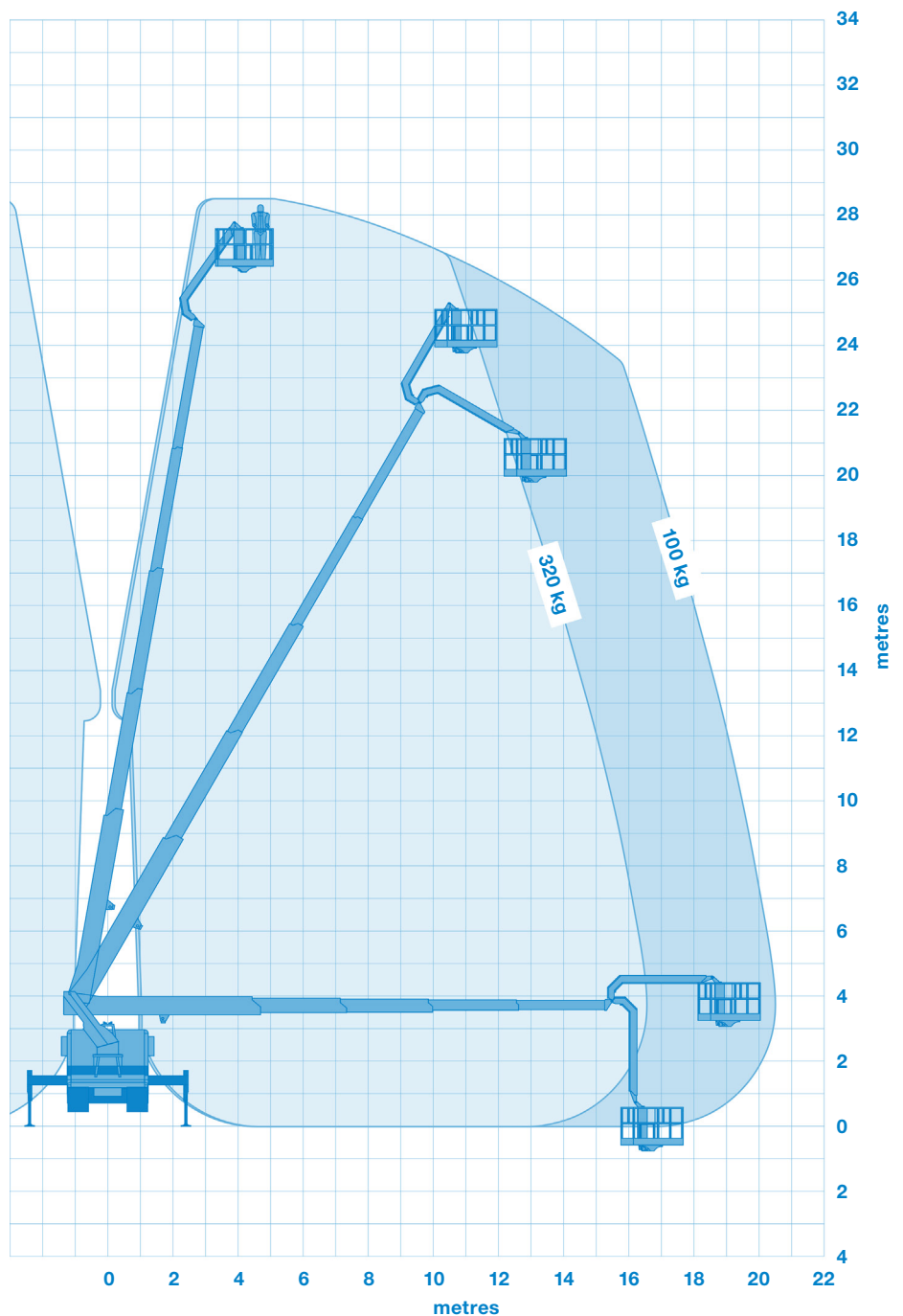
67 kN
Maximum Outrigger Loading



3 m
Maximum Jib Length



All measurements and weights are approximate and refer to the standard basic execution. Technical alterations reserved.



We can also provide the following services:

Traffic Management ▶ Trackway ▶ Rope Access ▶ Lifting solutions