

Ruthmann TBR220

↑
22 m
↓
Maximum
working
height



Mounted on a compact 3.5 ton truck the TBR220 is very easy to use, perfect for both self-drive and operated hire. Built with the outstanding quality that we expect from Ruthmann the TBR220 has an impressive outreach of up to 16.4 m and a cage capacity of 230 kg.

Material Handling Capabilities

- ✓ Cage capacity of 230 kg
- ✓ Lifting brackets available

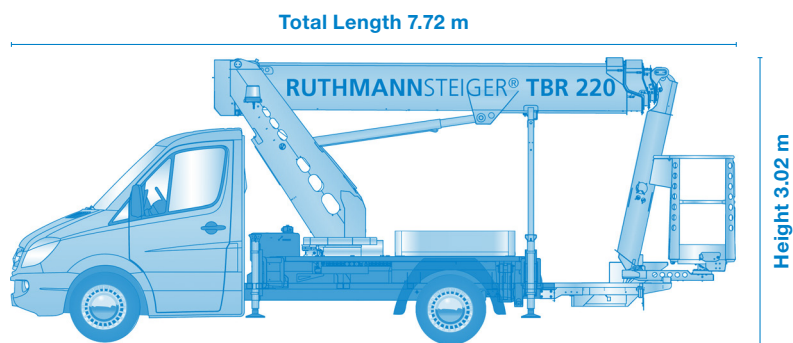
Key Benefits & Features

- ✓ Outreach of up to 16.4 m
- ✓ 110V power in the to work cage
- ✓ Variable jacking

Available for Hire with

- ✓ Lifting brackets
- ✓ Air & water in the work cage
- ✓ Available for self-drive hire or with an operator

Ruthmann TBR220



22 m
Working Height



L1.4 x W0.7 (m)
Standard Cage Dimensions



230 kg
Cage Capacity



3.02 m
Transport Height



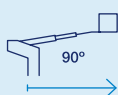
3.5 t
Gross Weight



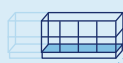
5°
Permissible Inclination



16.4 m
Lateral Outreach



L1.4 x W0.7 (m)
Maximum Cage Dimensions



2 x 85°
Cage Rotation



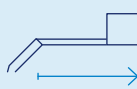
7.72 m
Transport Length



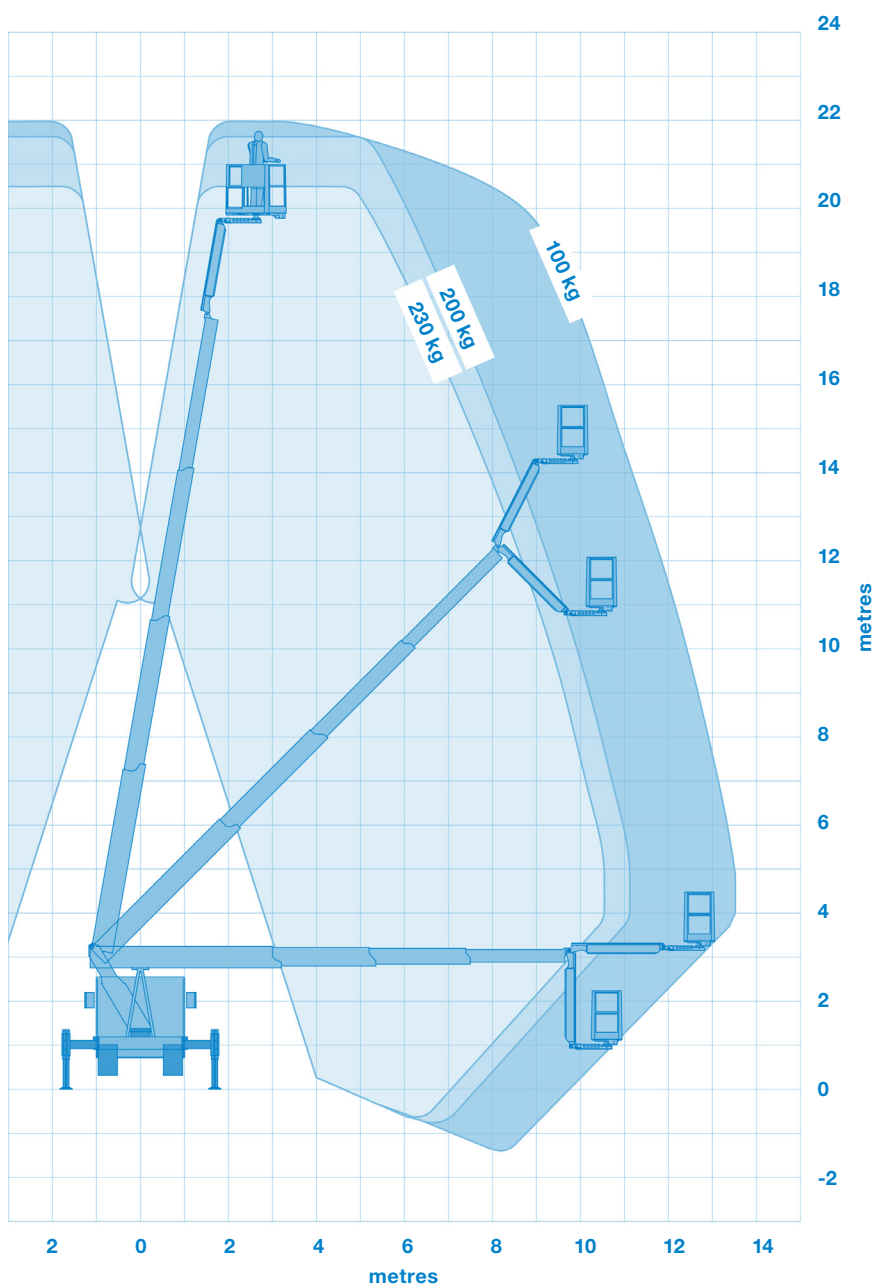
31 kN
Maximum Outrigger Loading



2.5 m
Maximum Jib Length



All measurements and weights are approximate and refer to the standard basic execution. Technical alterations reserved.



We can also provide the following services:

Traffic Management ▶ Trackway ▶ Rope Access ▶ Lifting solutions