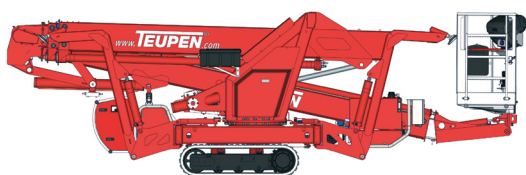


LEO23GT

Tracked Access Platform

↑
23 m
↓

Maximum working height



Compact and agile the LEO23GT is perfect for jobs with limited set-up space and complicated locations. It can be powered by either diesel or 230 V electric and has a transport width of just 0.98 m wide enabling it to fit through many entrance doors. The tracks have mechanically variable height adjustment so that it can be driven on slopes and the variable outrigger system allows it to be set-up in complicated locations.

LEO23GT Features

Track Chassis

- ✓ Powerful track drive with hydraulic braking system
- ✓ Precise manoeuvring over sensitive electro-hydraulic cable remote control
- ✓ Indoor non marking rubber track, with less tread depth to enable smooth travelling
- ✓ Mechanically height and width adjustable track chassis

Stabilisation

- ✓ Fully-hydraulic automatic levelling system with outrigger/stabiliser set-up monitoring
- ✓ Variable outrigger/stabiliser system with one-side or both-sides narrow set-up option
- ✓ Wear resistant, anti-friction PVC outrigger feet

Productivity, Safety, Quality

- ✓ 230 V (EU) double power outlet in the basket
- ✓ Ergonomically shaped basket with eyelets for safety belts and tool tray
- ✓ Hydraulic emergency lowering via hand pump
- ✓ Cables and hoses are safety routed through the boom structure
- ✓ Complete second control box on the chassis and error analysis with display
- ✓ Biodegradable hydraulic oil

Boom System

- ✓ Telescoping upper and lower booms, trapezium-shaped aluminium profiles
- ✓ All functions are available from one control panel
- ✓ Electric-proportional controls with intuitive operator guidance
- ✓ Robust, lockable control panel with integrated operation function
- ✓ Self-levelling platform with electro-hydraulic levelling system
- ✓ Corner mounted 180° turntable basket for extra flexibility
- ✓ Boom rotation via high-performance slew ring, worm gear and hydraulic motor

Power Sources

- ✓ 230 V electric motor (EU)
- ✓ Kubota Diesel engine Z602 (10.8 kW / 14.5 hp), with electronically regulated engine control
- ✓ Start-Stop switch of combustion engine in the basket

Accessories

- ✓ Outrigger / stabiliser pad (450 x 400 x 40 mm)

LEO23GT

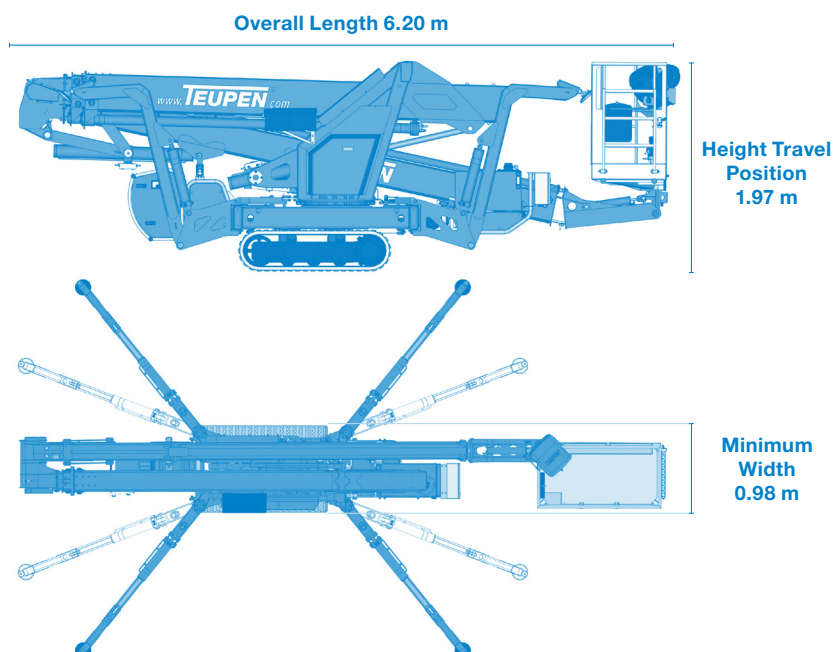
Specification

Measurements	
Working height	23 m
Horizontal outreach max.	11.5 m
Horizontal outreach with 200 kg	11.2 m
Length outrigger footprint standard	4.53 m
Width outrigger footprint standard	4.33 m
Length footprint one side narrow	5.98 m
Width footprint one side narrow	3.42 m
Width footprint both sides narrow	2.58 m
Total weight	2990 kg
Max outrigger loading	22.4 kN
Maximum jib length	1 m

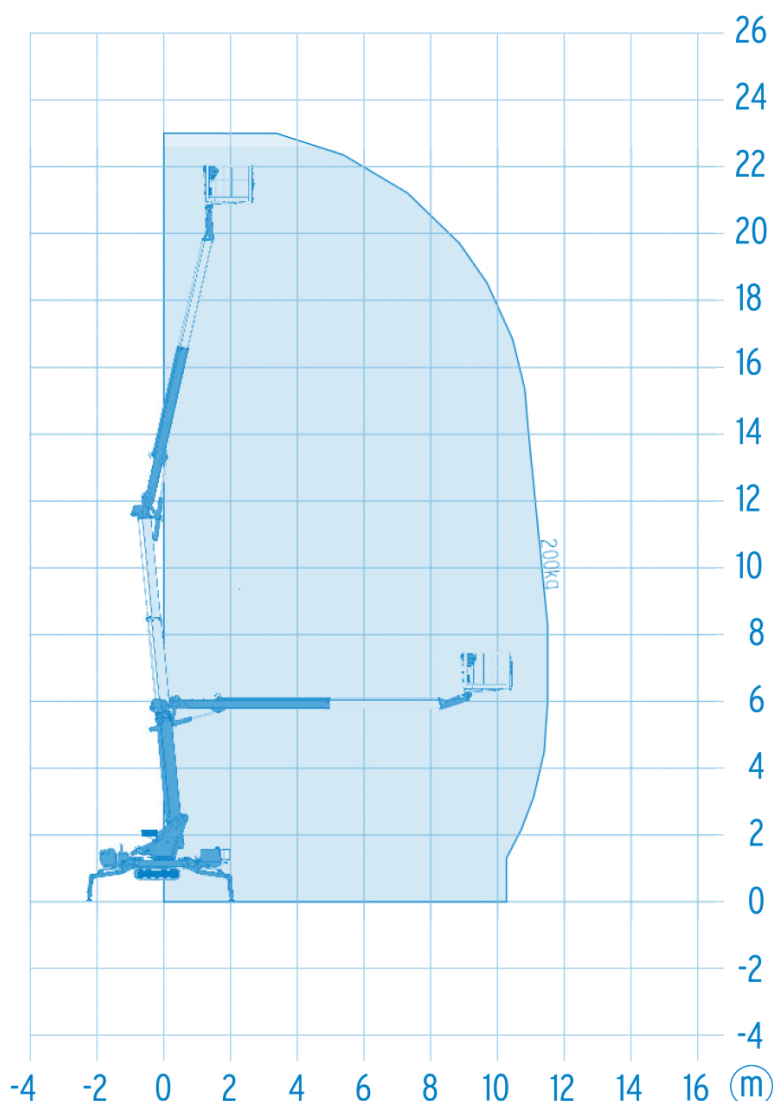
Productivity	
Basket capacity	200 kg
Basket rotation	180°
To be jacked up on ground slope of	16.7°
Height and width track adjustment	23/45 cm
Permissible inclination	16.7°

All measurements and weights are approximate and refer to the standard basic execution. Technical alterations reserved.

Measurements



Working Envelope



We can also provide the following services:

Traffic Management ▶ Trackway ▶ Rope Access ▶ Lifting solutions