

Bronto S56XR

↑
56 m
↓

Maximum
working
height



With up to 56 m of working height and 38.5 m of lateral outreach this MEWP has outstanding manoeuvrability. The S56XR can be utilised for lifting bulky materials using the wirelessly controlled 1300 kg boom winch or 400 kg cage winch.

Material Handling Capabilities

- ✓ Cage capacity of 600 kg
- ✓ Boom & cage winch available
- ✓ Lifting brackets available
- ✓ Extendable work cage

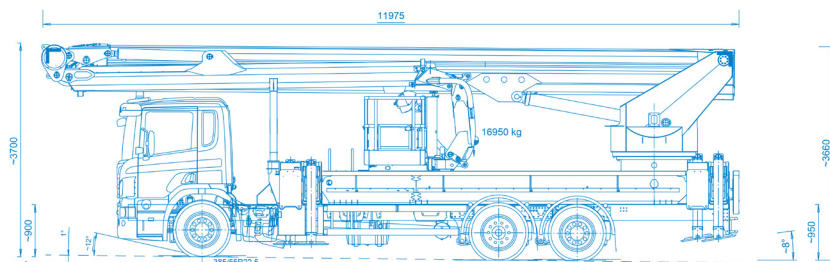
Key Benefits & Features

- ✓ Up to 38.5 meters lateral outreach
- ✓ Negative reach of up to 9 m
- ✓ On-board generator supplies 110V, 230V & 400V power to work cage

Available for Hire with

- ✓ 1300kg integrated boom winch
- ✓ 400kg cage winch
- ✓ Lifting brackets
- ✓ Camera attachment or lighting rig
- ✓ Air & water in the work cage

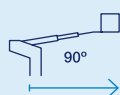
Bronto S56XR



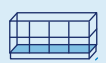
56 m
Working Height



38.5 m
Lateral Outreach



**L1.05 x
W2.4 (m)**
Standard Cage
Dimensions



**L1.05 x
W3.7 (m)**
Maximum Cage
Dimensions



600 kg
Cage Capacity



2 x 90°
Cage Rotation



3.8 m
Transport Height



12 m
Transport Length



26 t
Gross
Weight



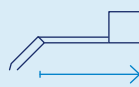
190 kN
Maximum
Outrigger Loading



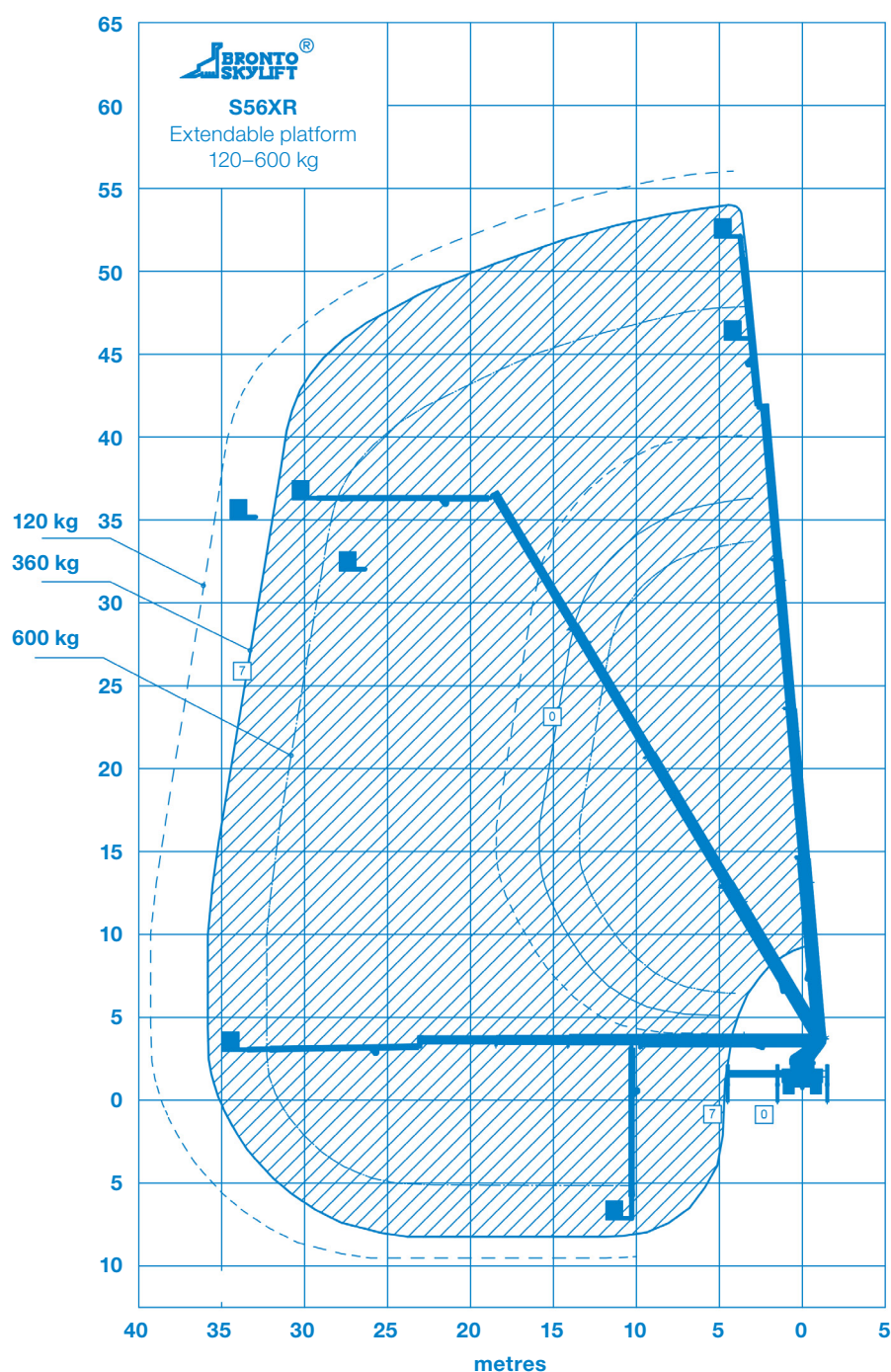
0.3°
Permissible
Inclination



15 m
Maximum
Jib Length



All measurements and weights are approximate and refer to the standard basic execution. Technical alterations reserved.



We can also provide the following services:

Traffic Management ▶ Trackway ▶ Rope Access ▶ Lifting solutions