

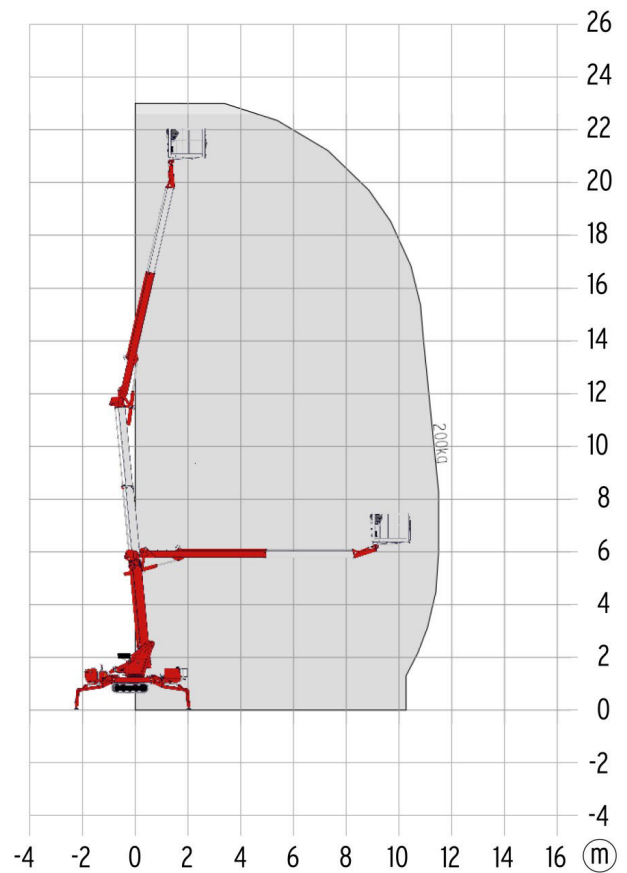
LE023GT Specification

MEASUREMENTS	METRIC	US
Working height, max.	23,00 m	74 ft 10 in
Horizontal outreach max	11,50m	37 ft 9 in
Horizontal outreach with 200 kg	11,20 m	36 ft 8 in
Platform height (A)	1,10 m	3 ft 7 in
Platform length (B)	1,42 m	4 ft 8 in
Platform width (C)	0,70 m	2 ft 3 in
Length, overall (D)	6,20 m	20 ft 4 in
Height, travel position (F)	1,97 m	6 ft 6 in
Width, minimal overall width (G)	0,98 m	3 ft 3 in
Ground clearance, max. (H)	0,40 m	1 ft 3 in
Track (L x W) (I)	1,45 m x 0.20 m	4 ft 9 in x 7 3/4 in
Length outrigger footprint standard (J)	4,53 m	14 ft 10 in
Width outrigger footprint standard (K)	4,33m	14 ft 3 in
Length footprint one side narrow (L)	5,98 m	19 ft 7 in
Width footprint one side narrow (M)	3,42 m	11 ft 3 in
Width footprint both sides narrow (N)	2,58 m	8 ft 6 in
Outrigger plate	0,18 m	7 in

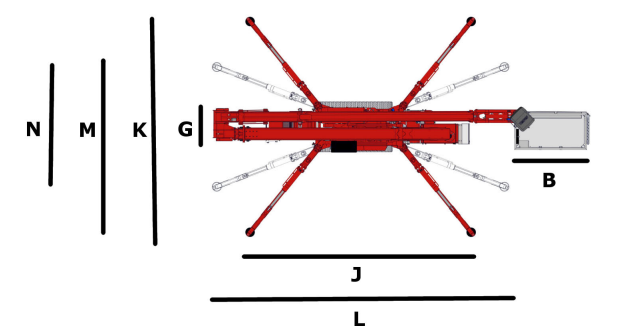
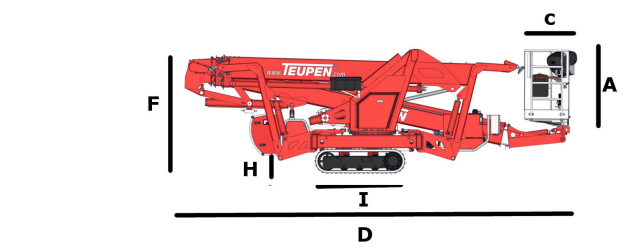
PRODUCTIVITY	METRIC	US
Basket capacity	200 kg	441 lbs
Movable jib	-	-
Basket rotation	180°	180°
Turret rotation	360°	360°
To be jacked up on ground slope of	16,7°/30,0%	16,7°/30,0%
Height and width track adjustment	23/45 cm	9/17 3/4 in
Gradeability, max.	16,7°/30,0 %	16,7°/30,0 %
Slope angle	15,5°/27,0 %	15,5°/27,0 %
Travel speed	1,3 km/h	0.8 mph

WEIGHT	METRIC	US
Total weight	2990kg	6,592 lbs
Live load in travelling position	4,02 kN/m ²	94.0 psf
Live load in working position	1,78kN/m ²	32.8 psf
Point load per outrigger plate, max.	22,40 kN	

POWER		
Standard power sources	1) Electric: 230 V, 12,9 A, 2,2 kW	
(Electric and combustion engine)	2) Diesel: Kubota Z 602 (10,8 kW / 14,5 hp)	
Fuel tank capacity Diesel engine	12,0 l	3.17 gal



WORKING ENVELOPE



STANDARDS COMPLIANCE

2006/42/EC - Machinery directive
(Harmonised standard EN280:2001 + A2:2009); 2004/108/EC (EMC);
2000/14/EC (Noise emission directive - outdoor)

All measurements and weights are approximate and refer to the standard basic execution. Technical alterations reserved.

Tel: 0845 274 3627 Fax: 0114 2617333
Email: hiredesk@elev8hire.com
www.elev8hire.com

Conditions are subject to change without notice or obligation. Photographs and drawings in this document are for illustrative purposes only. Refer to the appropriate Operator's Manual for instructions on the proper use of this equipment. Failure to follow the appropriate Operator's Manual when using our equipment or to otherwise act irresponsibly may result in serious injury or death. The only warranty applicable to our equipment is the standard written warranty applicable to the particular

LEO23GT Features

TRACK CHASSIS

- Powerful track drive with hydraulic braking system
- Precise maneuvering over sensitive electrohydraulic cable remote control
- Indoor non marking rubber track, with less tread depth the profile enables smooth travelling
- Mechanically height and width adjustable track chassis

STABILISATION

- Fully-hydraulic, automatic levelling system with outrigger/stabiliser setup monitoring
- Variable stabiliser/outrigger system with one-side or both-sides narrow setup option
- Wear resistant, anti-friction PVC outrigger feet

BOOM SYSTEM

- Telescoping upper and lower booms, trapezium-shaped aluminium profiles
- All functions are available from one control panel
- Electric-proportional controls with intuitive operator guidance
- Robust, lockable control panel with integrated operation function
- Self-levelling platform with electro-hydraulic levelling system
- Corner-mounted 180° turnable basket for extra flexibility
- Boom rotation via high-performance slew ring, worm gear and hydraulic motor

POWER SOURCES

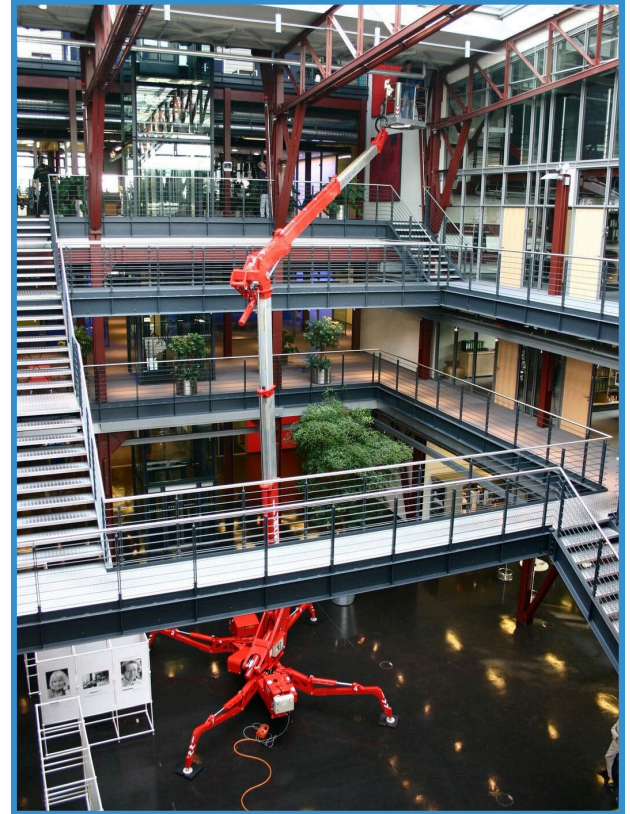
- 230 V electric motor (EU)
- Kubota Diesel engine Z602 (10,8 kW/14,5 hp) with electronically regulated engine control
- Start-Stop switch of combustion engine in the basket

PRODUCTIVITY, SAFETY, QUALITY

- 230 V (EU) power outlet in the basket
- Ergonomically shaped basket with eyelets for safety belts and tool tray
- High-quality paint in RAL 3020 (red)
- Hydraulic emergency lowering via handpump
- Cables and hoses are safely routed through the boom structure
- Biodegradable hydraulic oil
- Lock valves - hydraulic return valves directly on all hydraulic cylinders
- Relief valves protecting the hydraulic system from too high pressures
- Protective covers for oil-tank, emergency controls and connecting cables and hoses
- Hour meter
- Complete second control box on the chasis and error analysis with display
- Fuzzy IV control technology

ACCESSORIES

- Outrigger pad (450 x 400 x 40mm)



Elev8 Access Platforms Ltd

Unit 2b Clay Street
off Newhall Rd
Sheffield
S9 2PF

Tel: 0845 274 3627

Fax: 0114 261 7333

Web: www.elev8hire.com